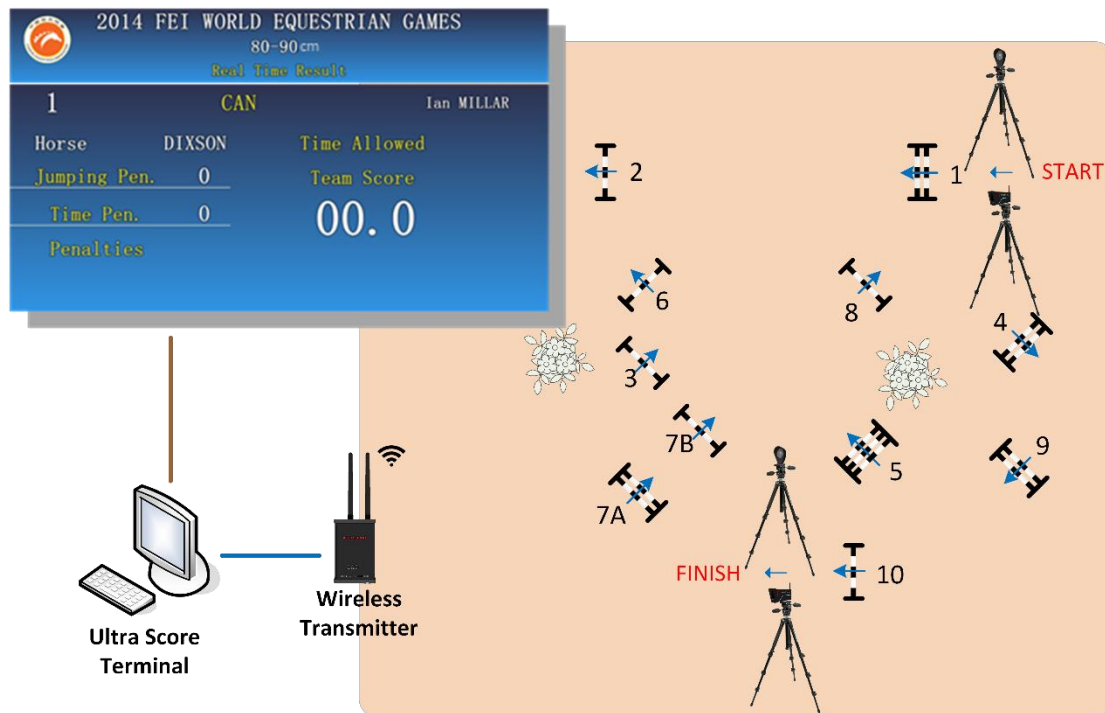


# Scoring & Timing Solution For Show Jumping

This is a general solution for LED display in show jumping stadium which has the functions of timing, scoring and displaying advertisement, notification, the information of order, score and result. It is an ideal choice for most of stadiums.

## 1. System Chart



## 1.2 System Structure Description

- 1) Two LED screens are controlled by separate computer which connects with LED sending card.
- 2) One laptop is equipped on the court working as Ultra score terminal special for referees' operation.
- 3) All computers are connected into LAN in stadium.
- 4) Wireless Transmitter (KS-LDWT) connects with the control computer via a USB cable.

## 2. Specification for products

### 2.1 Ultra Score Software


Products	Details
Network standard edition	<ul style="list-style-type: none"><li>◆ Terminal + 1 Display</li><li>◆ Supports: Equestrian (Jumping)</li><li>◆ English version</li><li>◆ Including 1 dongle</li></ul>

#### Software interface for equestrian

##### Order

2014 FEI WORLD EQUESTRIAN GAMES			
80-90cm			
Order	Rider	Horse Name	Region
	Bertram ALLEN	MOLLY MALONE V	 IRL
	Patrice DELAVEAU	ORIENT EXPRESS I	 FRA
	Gregory WATHELE	CONRAD DE HUS	 BEL
	Beezie MADDEN	CORTES 'C	 USA
	Rolf-Goran BENGTE	CASALL ASK	 SWE
	Pénélope LEPREVE	FLORA DE MARIPO	 FRA
	Daniel DEUSSER	CORNET D'AMOUR	 DEU

##### Score

2014 FEI WORLD EQUESTRIAN GAMES			
80-90cm			
1	 IRL	Bertram ALLEN	
Horse Name: MOLLY MALONE V		Time Allowed: 70	
Jumping Penalties 0		Team Score:	
Time Penalties 0			
Penalties			
			00.0

## Result

# 2014 FEI WORLD EQUESTRIAN GAMES

80-90cm

Rank Rider	Horse Name	Region	Penalties	Time	Score
------------	------------	--------	-----------	------	-------

## 2.2 Wireless Transmitter

Item	Details
Wireless Transmitter	<p>Type: KS-LDWT Size: 65x23x100 (mm) Communication: 433MHz Wireless Function:</p> <ul style="list-style-type: none"><li>◆ Must be used together with Show Jumping Scoring Software.</li><li>◆ Wireless transmit the trigger time.</li><li>◆ Wireless communication distance up to 800m.</li></ul>



### 2.3 Wireless Photocell

Item	Details
Wireless Photocell	<p>Type: KS-PTCL Size: 180x85x50 (mm) Communication: 433MHz Wireless Function:</p> <ul style="list-style-type: none"><li>◆ Must be used together with Show Jumping Scoring Software.</li><li>◆ Detect the cut off of the light, and send the wireless signal.</li><li>◆ Light detect distance 20M.</li><li>◆ Can be setup as Start, Finish, or the Finish of the 2<sup>nd</sup> phase easily.</li></ul>



## 2.4 Reflect Panel

Item	Details
Reflect Panel	Type: KS-PTCL-REFL Size: 90*130*55(mm) Function: ◆ Reflect the light from the photocell.



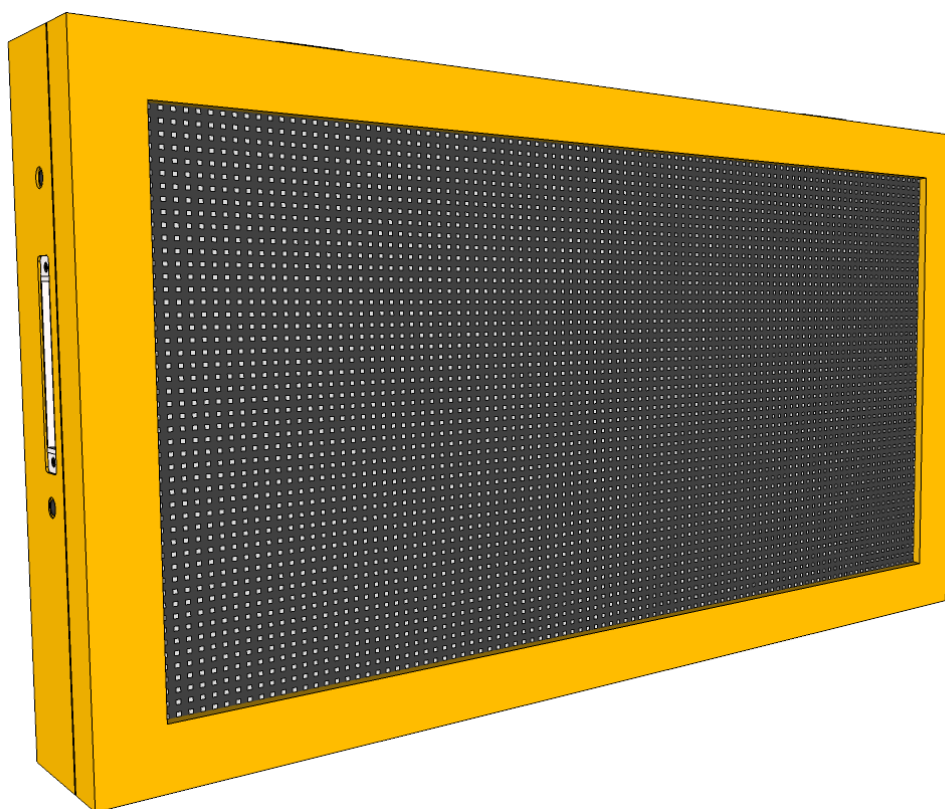
## 2.5 LED Display

Item	Details
LED Display	<p>Type: KS-SCRN-LED960160 Size: 960*160*100(mm) Material: Aluminum Input: 48V DC Function:</p> <ul style="list-style-type: none"><li>◆ Must be used together with Show Jumping Scoring Software.</li><li>◆ Display athlete's number and name.</li><li>◆ Display athlete's number, current time and penalty.</li><li>◆ Display athlete's number and rank.</li></ul>



## 2.6 LED Display

Item	Details
LED Display	Type: KS-SCRN-LED960480 Size: 1080*600*145(mm) Material: Aluminum Function: <ul style="list-style-type: none"><li>◆ Must be used together with Show Jumping Scoring Software.</li><li>◆ Display athlete's rank, name and match time.</li></ul>





## 2.7 Score Display Controller

Item	Details
Score Display Controller	<p>Type: KS-DPC-G</p> <p>Size: 142*87*62(mm)</p> <p>Function:</p> <ul style="list-style-type: none"> <li>◆ Output: 1024×768</li> <li>◆ Output score display to one LCD monitor.</li> <li>◆ Screen will be updated in real time based on the referee's operation.</li> </ul>



## Display interface of Equestrian

# 2014 FEI WORLD EQUESTRIAN GAMES

80-90cm

Real Time Result

## IRL

Bertram ALLEN

Horse	MOLLY MALONE V	Time Allowed	70
Jumping Pen.	0	Team Score	
Time Pen.	0		00.0
Penalties			

#### Device parameters

Model	KS-DPC-G
Platform	Freescall
Chassis	
Color	Black
Dimension	142mm × 87mm × 62mm (W×D×H)
Material	Aluminium alloy
CPU	Freescall Cortex™-A9 i.MX 6 series (Single-core/dual-core/ Quad Core CPUs)
Memory	Onboard 1GB/2GB DDR3 800MHz RAM
Storage	
Flash	Onboard 4GB/8GB iNAND flash
TF/HDD	1x SATA2,1x Micro SD(determined by the CPU model, optional)
System	
LAN	10/100/1000Mbps ,1x LAN,1x USB-WIFI, 3G (optional)
USB2.0	2x USB2.0 on front panel ,1x USB OTG
Serial Port	5X 4 -wire serial port, COM2: RS422/485
Display	1x HDMI, 1x VGA
Audio	1x Mic, 1x Headphone
Power	
Power Supply	DC +12V Power Adapter
Reliability	
Installation	Desktop Installation or Wall mount
Operating Temperature	-20℃~60℃
Storage Temperature	-40℃~80℃
Relative Humidity	5%~95%, relative humidity, non-condensing
Vibration Test	0.5grms/5~500Hz/random operating
EMC	CE/FCC Class B