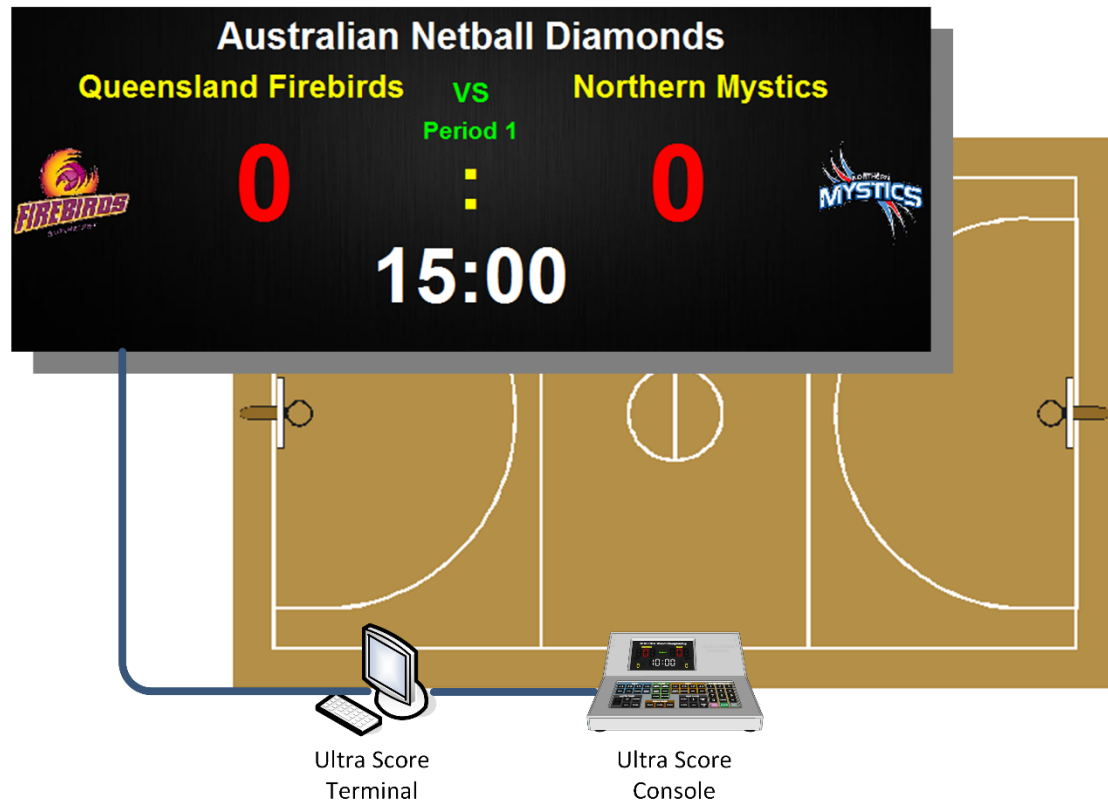


# Scoring & Timing Solution For Netball

This is a general solution for LED display in stadium which has the functions of timing, scoring, displaying advertisement, notification, the information of referees and teams. It is an ideal choice for most of stadiums.

## 1. System Chart



## 1.2 System Structure Description

- 1) One or two LED screens are controlled by separate computer which connects with LED sending card.
- 2) One laptop and score console are equipped on the court working as Ultra score terminal special for referees' operation.
- 3) All computers are connected into LAN in stadium.
- 4) Both of the LED screens can show the same contents or different contents as required.

## 2. Specification for products

### 2.1 Ultra Score Software

Products	Details
Standalone edition	<ul style="list-style-type: none"><li>◆ Installed on one PC.</li><li>◆ Supports: Netball</li><li>◆ English version</li><li>◆ Including 1 dongle</li></ul>
Standard network edition	<ul style="list-style-type: none"><li>◆ Terminal + 1 Display</li><li>◆ Supports: Netball</li><li>◆ English version</li><li>◆ Including 1 dongle</li></ul>
Professional network edition	<ul style="list-style-type: none"><li>◆ Terminal + Referee + 2 Display</li><li>◆ Supports: Netball</li><li>◆ English version</li><li>◆ Including 1 dongle</li></ul>

#### **Difference:**

##### **Standalone Edition:**

Match management, Scoring, and Media display functions, all in one installed on a PC. Referee must do operation on the PC for display directly.

It is suitable for the stadium where has just one screen, which doesn't have strict needs of the scoring and timing accuracy.

##### **Network Standard Edition:**

Score terminal and media player functions can be installed on 2 PCs respectively. So that one independent PC can be setup on the courtside special for referee's operation, the other PC running as media player to manage the LED display.

It is suitable for the stadium where has one screen, needs to do the scoring and timing on the courtside.

##### **Network Professional Edition:**

Except the function of score terminal, 1-3 media players can be equipped on PCs separately, in order to display different contents on several LED screens.

It is suitable for the stadium where has more than 2 screens where referee need to do scoring on the courtside and LED screens need to display different contents separately. (For example, one LED screen is for scoreboard and another is for advertising or player info).

Scoring interface for netball:

**Australian Netball Diamonds**

GS Romelda GA Laura WA Nicola C Demelza WD Clare GD Jacinta GK Stephanie Kimberley Verity Gabrielle Ameliaranne Amorette	<p style="font-size: 24px; margin: 0;"><b>Queensland Firebirds vs Northern Mystics</b></p> <p style="font-size: 20px; margin: 0;">Quarter 1</p> <p style="font-size: 48px; margin: 10px 0;">0 : 0</p> <p style="font-size: 48px; margin: 10px 0;">15:00</p>	GS Kayla GA Anna WA Cathrine C Bailey WD Jessica GD Grace GK Maria Charlotte Elisapeta Malia Julie
---	---	--

**Australian Netball Diamonds**

**Queensland Firebirds vs Northern Mystics**

Quarter 1

0 : 0

15:00

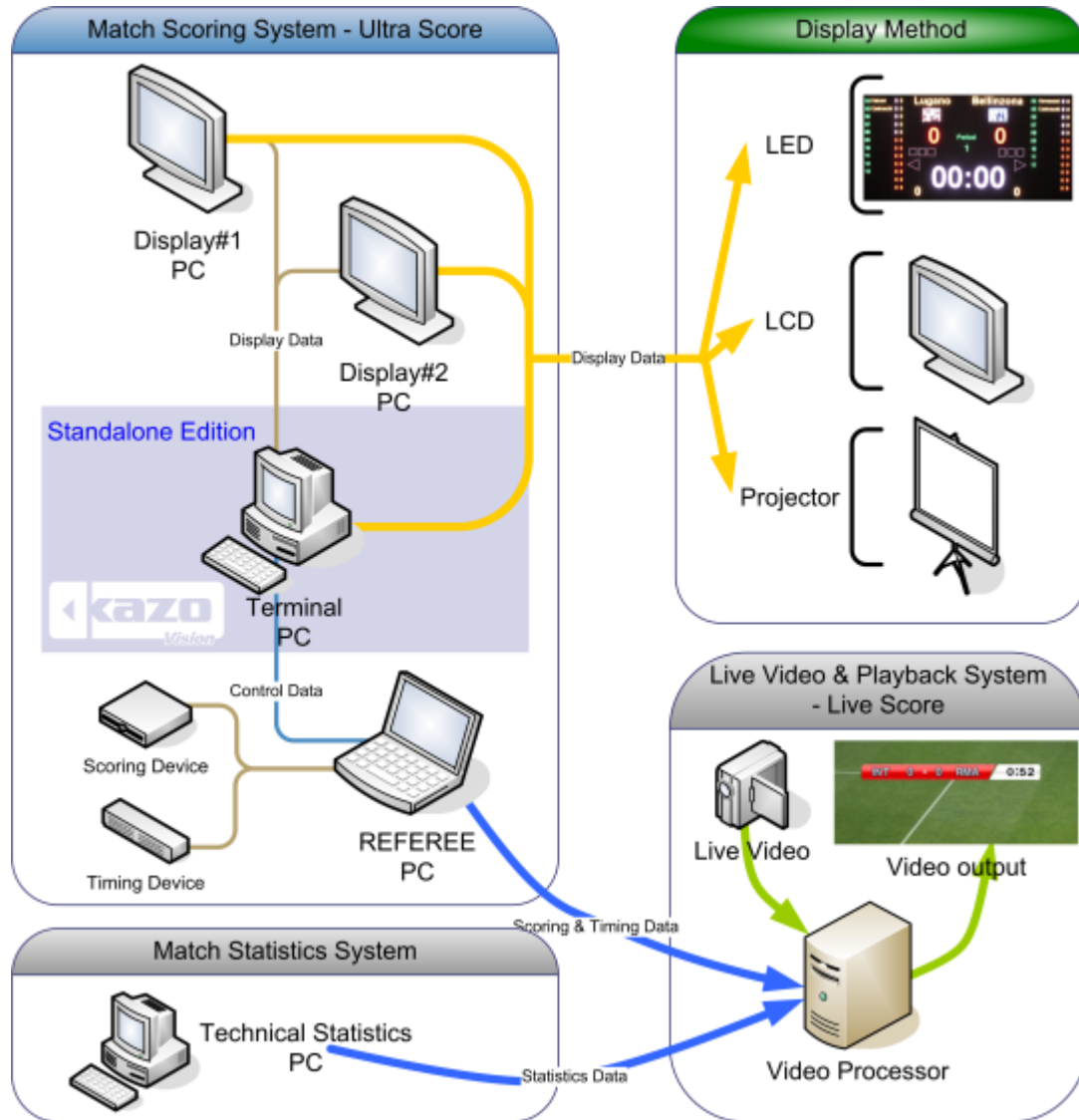
**Australian Netball Diamonds**

<p style="font-size: 24px; margin: 0;"><b>Queensland Firebirds</b></p> <p><b>Manager:</b></p> <p><b>Coach:</b></p> <p><b>Players:</b></p> <table border="0" style="width: 100%; border-collapse: collapse;"> <thead> <tr> <th style="width: 5%;">No</th> <th style="width: 25%;">Name</th> <th style="width: 20%;">Position</th> </tr> </thead> <tbody> <tr><td>1</td><td>Romelda</td><td>GS</td></tr> <tr><td>2</td><td>Laura</td><td>GA</td></tr> <tr><td>3</td><td>Nicola</td><td>WA</td></tr> <tr><td>4</td><td>Demelza</td><td>C</td></tr> <tr><td>5</td><td>Clare</td><td>WD</td></tr> <tr><td>6</td><td>Jacinta</td><td>GD</td></tr> </tbody> </table>	No	Name	Position	1	Romelda	GS	2	Laura	GA	3	Nicola	WA	4	Demelza	C	5	Clare	WD	6	Jacinta	GD	<p style="font-size: 24px; margin: 0;"><b>Northern Mystics</b></p> <p><b>Manager:</b></p> <p><b>Coach:</b></p> <p><b>Players:</b></p> <table border="0" style="width: 100%; border-collapse: collapse;"> <thead> <tr> <th style="width: 5%;">No</th> <th style="width: 25%;">Name</th> <th style="width: 20%;">Position</th> </tr> </thead> <tbody> <tr><td>1</td><td>Kayla</td><td>GS</td></tr> <tr><td>2</td><td>Anna</td><td>GA</td></tr> <tr><td>3</td><td>Cathrine</td><td>WA</td></tr> <tr><td>4</td><td>Bailey</td><td>C</td></tr> <tr><td>5</td><td>Jessica</td><td>WD</td></tr> <tr><td>6</td><td>Grace</td><td>GD</td></tr> </tbody> </table>	No	Name	Position	1	Kayla	GS	2	Anna	GA	3	Cathrine	WA	4	Bailey	C	5	Jessica	WD	6	Grace	GD
No	Name	Position																																									
1	Romelda	GS																																									
2	Laura	GA																																									
3	Nicola	WA																																									
4	Demelza	C																																									
5	Clare	WD																																									
6	Jacinta	GD																																									
No	Name	Position																																									
1	Kayla	GS																																									
2	Anna	GA																																									
3	Cathrine	WA																																									
4	Bailey	C																																									
5	Jessica	WD																																									
6	Grace	GD																																									

**Australian Netball Diamonds**

<b>Name</b>		<b>Region</b>
-------------	--	---------------

**System Diagram:**



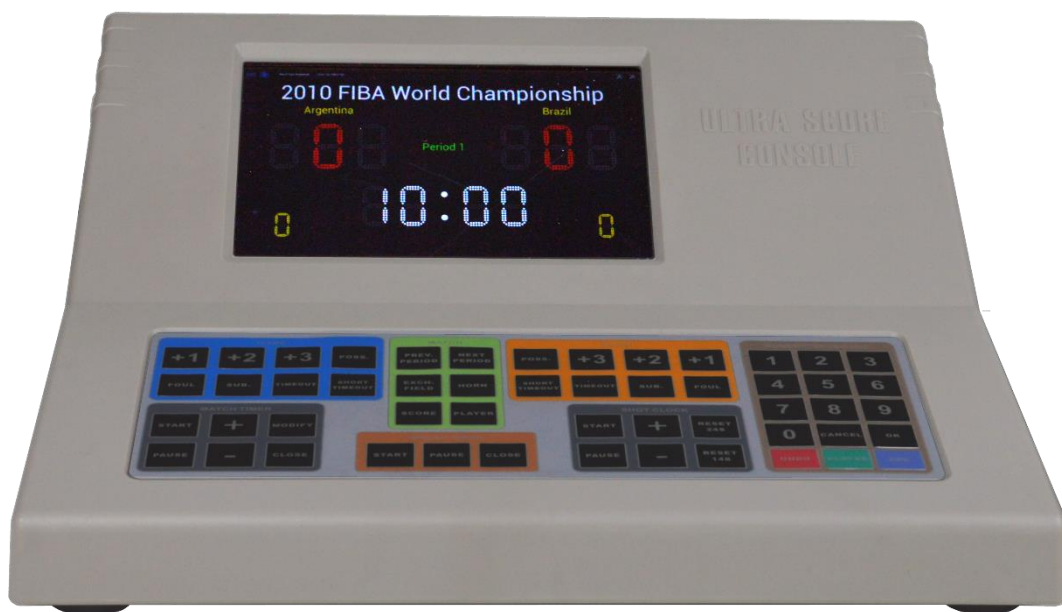
## Features

### Features

- (1) Professional scoreboard display: Scoring and timing operation, layout of scoreboard can meet international game rules.
- (2) Match management: Information of match, team, team members and coaches can be saved in advance. And referee's scoring operation during the match can be recorded and output.
- (3) Scoring functions: Include operation and display of teams and players' point, foul and substitutions.
- (4) Timing functions: Include operation and display of game time, pause, break time, count down time and system time.
- (5) Convenient operation feeling: Referees can do operation on a special score console as well as by using shortcuts on the keyboard.
- (6) Powerful media player: Kinds of media formats are supported. It is easy to switch between the scoreboard and video.
- (7) Notification: Rolling to display short notice on the screen which allows to set the speed, colors, fonts freely.
- (8) Customization: All contents on the scoreboard including fonts, color and layout can be modified to meet clients' needs.
- (9) Self-adaptation: With easy configuration, score information can be displayed on kinds of LED and LCD screen by using this system which can adjust the layout to meet any sizes of screen.
- (10) Security: Auto backup function will help you recover the match immediately from the computer fault.

## 2.2 Wire / Wireless Score Console

Item	Details
Wire/Wireless score console	<p>Type: KS-GC16    Size: 330x290x140(mm)</p> <ul style="list-style-type: none"> <li>◆ Used with the Ultra score software</li> <li>◆ Communication: 1*Ethernet, 1*WIFI</li> <li>◆ With 7" full color LCD screen</li> <li>◆ Material: Plastic</li> <li>◆ Support: Netball</li> <li>◆ Functions: Scoring, timing, giving a point to team member, foul, switching between ads and scoreboard etc.</li> </ul>



### 2.3 Meet Management Server

Products	Details
<b>Meet Management Server</b>	<p>Type: KS-MMS-MINI Size: 182x178x36(mm) Weight: 1.2 KG Features:</p> <ul style="list-style-type: none"><li>● Multi-court arrangement, auto generate the order form.</li><li>● Multi-project arrangement, make the schedule more smoothly.</li><li>● Monitor the status of each court in real time, including the current field, rotation and player info.</li><li>● Court adjustment, can manually modify the match court and session info.</li><li>● Summary and print integrated report.</li></ul>

